

Press-on bands

Technical Data Book Industrial/ MPT/ EM Tyres

Continental-Press-on bands – puncture-proof and maintenance-free



MH 20

MC 20

MH 20 Clean

MC 20 Clean

To meet the full span of different requirements we offer a large programme of tyres. In toughest conditions these rubber tyres provide a failsafe and maintenance-free solution. But also with electric fork lifts Elastic offers economic performance due to its low rolling resistance.

Elastic steel-based press-on bands offer the smallest possible sizes for ultra-heavy loads. The press-on band consists of a steel ring with a vulcanised-on rubber cushion. This structure provides for good heat dissipation, via the steel ring, and the best possible adhesion of rubber to steel.

The steel-based tyres attain outstanding mileage performance, even under full utilisation of their speed and load potential.

The sturdy steel ring allows for easy mounting and effectively protects the sides of the rim.

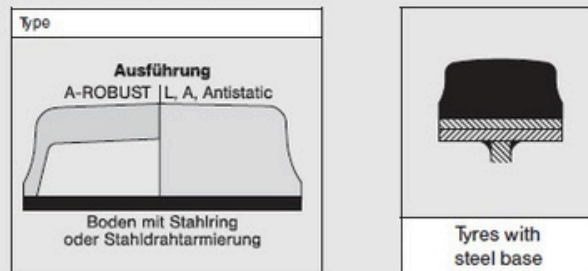
Elastic tyres with steel wire reinforcement have several wire cores embedded in a tyre base made of a special tough, hard rubber

compound. This design gives the tyre a particularly close fit on the rim through high friction between rubber and steel rim. This proven design permits remarkably high load capacities.

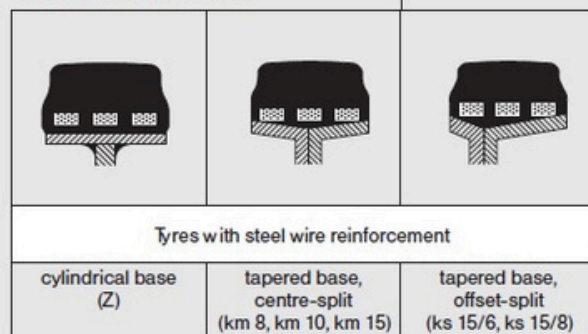
The light-coloured Clean version corresponds to the compound used in the CSE tyres, and so it cannot leave any traces of black rubber even under braking.

The Tread Layer Designs

Type	Symbol	Application
L		Press-on tyres with an exceptional free running ability for non-driven and non-braked wheels.
A		For driven and braked wheels which perform under arduous conditions and need to be exceptionally wear resistant and of high structural durability.
A-ROBUST		Well-cushioned, wide elastic tyres are made in this version to lower both the rolling resistance and the heat build-up, with the following distinctive features: <ul style="list-style-type: none"> extreme cost-efficiency excellent rolling resistance capability of withstanding sustained use under maximum load. (For sizes see page 19/20).
ANTISTATIC		Electrostatically effective with an electrical resistance of less than 10^6 Ohms (WdK-Guideline 110, BS 2050, ISO Standard 2883 and EN 1755), leaves no marks for explosionproof industrial vehicles. Eclectic contact between tyre and rim must be ensured. Note: Prolonged contact with media that cause swelling (such as oil or solvents) reduces the conductivity.
CLEAN		light-coloured compound for clean industrial floors

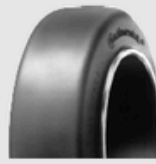
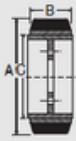


The rim versions*



*Elastic wheels are available on request

Steel banded press-on bands acc. to DIN 7845 resp. ETRTO



MH 20 ●



MC 20 ■

Tyre size ¹⁾			Tyre load capacity (kg) at max. speed (mph)					
Inch (A x B x C)	mm (A/B-C)	Pattern	counterbalanced-fork-lift-trucks				on other vehicles ²⁾ upto	
			6 mph Load wheel	6 mph Steered wheel	10 mph Load wheel	10 mph Steered wheel	10 mph	hand-drawn
	200/ 85-105	●	-	-	-	-	408	680
	180/ 50-120	●	-	-	-	-	185	310
	200/ 50-140	●	-	-	-	-	200	335
	250/ 75-140	●	-	-	-	-	400	665
	250/100-140	●	760	625	680	570	545	-
	250/130-140	●■ ⁴⁾	1065	875	950	800	760	-
	265/160-160	●	1415	1165	1265	1060	1010	-
10 x 4 x 6 1/2	254/102-165	●	780	640	695	585	555	-
10 x 5 x 6 1/2	254/127-165	●	1010	830	905	760	725	-
10 1/2 x 5 x 6 1/2	267/127-165	●	1075	885	960	805	770	-
	230/ 50-170	●	-	-	-	-	225	370
	230/ 75-170	●	-	-	-	-	370	615
	250/ 80-170	● ⁴⁾	-	-	-	-	440	735
	250/105-170	● ⁴⁾	785	645	700	590	560	-
	250/ 60-190	●	-	-	-	-	300	495
	250/ 85-190	●■ ⁴⁾	-	-	-	-	455	760
	280/ 60-190	●	-	-	-	-	325	540
	300/100-203	●	870	715	755	620	615	-
13 x 3 1/2 x 8	330/ 89-203	●	785	645	705	590	620	-
13 x 4 1/2 x 8	330/114-203	●	1120	920	1000	840	800	-
13 x 5 x 8	330/127-203	●	1290	1060	1150	965	920	-
13 1/2 x 5 1/2 x 8	343/140-203	●■ ⁴⁾	1505	1235	1345	1130	1075	-
14 x 4 1/2 x 8	356/114-203	●■ ⁴⁾	1170	960	1045	875	835	-
	280/ 50-220	●	-	-	-	-	260	430
	285/ 75-220	●	-	-	-	-	425	710
16 x 5 x 10 1/2	406/127-267	●■ ⁴⁾	1510	1240	1345	1130	1075	-
16 x 6 x 10 1/2	406/152-267	●■ ⁴⁾	1915	1570	1710	1435	1365	-
	360/ 60-270	●	-	-	-	-	390	655
	360/ 85-270	●	-	-	-	-	635	-
15 x 5 x 11 1/4	381/127-286	●■	1390	1145	1240	1045	995	-
15 x 6 x 11 1/4	381/152-286	●■	1715	1410	1535	1290	1230	-
16 1/4 x 5 x 11 1/4	413/127-286	●■	1525	1250	1360	1145	1090	-
16 1/4 x 6 x 11 1/4	413/152-286	●■	1920	1575	1715	1440	1370	-
16 1/4 x 7 x 11 1/4	413/178-286	●■ ⁴⁾	2315	1900	2065	1735	1655	-
	405/ 65-305	●	-	-	-	-	475	790
	405/130-305	●	1510	1240	1345	1130	1080	-
	405/260-305	●	3325	2730	2970	2495	2375	-
	415/ 75-305	●	-	-	-	-	585	975
	415/ 90-305	●	-	-	-	-	760	-
	415/100-305	●	1115	915	995	835	795	-
	415/200-305	●	2610	2140	2330	1960	1860	-
	425/150-305	●	1910	1570	1705	1430	1365	-
	425/260-305	●	3615	2970	3230	2710	2585	-
	425/300-305	●	4245	3490	3790	3185	3035	-
	450/260-305	●	3945	3240	3520	2960	2820	-
	450/300-305	● ⁴⁾	4650	3820	4150	3490	3320	-

Tyre size ¹⁾			Tyre load capacity (kg) at max. speed (mph)					
Inch (A x B x C)	mm (A/B-C)	Pattern	counterbalanced-fork-lift-trucks upto				on other vehicles ²⁾ upto	
			6 mph Load wheel	6 mph Steered wheel	10 mph Load wheel	10 mph Steered wheel	10 mph	hand-drawn
17 x 4 1/2 x 12 1/8	432/114-308	●	1370	1125	1225	1030	980	-
18 x 5 x 12 1/8	457/127-308	●■ ⁴⁾	1645	1350	1465	1230	1175	-
18 x 6 x 12 1/8	457/152-308	●■ ⁴⁾	2095	1720	1870	1575	1500	-
18 x 7 x 12 1/8	457/178-308	●■ ⁴⁾	2550	2095	2280	1915	1820	-
18 x 8 x 12 1/8	457/203-308	●■ ⁴⁾	3005	2470	2685	2255	2145	-
18 x 9 x 12 1/8	457/229-308	●■ ⁴⁾	3460	2840	3090	2595	2470	-
	520/100-370	●	1275	1045	1140	955	910	-
21 x 5 x 15	533/127-381	●	1840	1510	1645	1380	1315	-
21 x 6 x 15	533/152-381	●	2355	1935	2105	1765	1680	-
21 x 7 x 15	533/178-381	●■ ⁴⁾	2870	2355	2560	2150	2050	-
21 x 8 x 15	533/203-381	●■ ⁴⁾	3385	2780	3020	2535	2415	-
21 x 9 x 15	533/229-381	●	3895	3200	3480	2925	2785	-
22 x 6 x 16	559/152-406	● ⁴⁾	2440	2005	2180	1830	1740	-
22 x 8 x 16	559/203-406 ²⁾	●■ ⁴⁾	3505	2880	3130	2625	2500	-
22 x 9 x 16	559/229-406 ²⁾	●■ ⁴⁾	4035	3315	3605	3025	2880	-
22 x 10 x 16	559/254-406 ²⁾	●■ ⁴⁾	4570	3750	4080	3425	3265	-
22 x 12 x 16	559/305-406 ²⁾	●■ ⁴⁾	5630	4625	5030	4225	4025	-
22 x 14 x 16	559/356-406 ²⁾	●	6415	5510	5995	5035	4795	-
22 x 16 x 16	559/406-406 ²⁾	●	7765	6380	6930	5820	5545	-
	500/ 65-410	●	-	-	-	-	565	940
	560/100-410	●	1350	1105	1205	1010	965	-
	550/160-410	●	2550	2095	2280	1915	1820	-
	610/150-410	●	2500	2055	2235	1875	1785	-
	620/200-410 ²⁾	●	3785	3105	3380	2835	2700	-
	645/250-410 ²⁾	●	4805	3930	4180	3430	3120	-
	645/300-410 ²⁾	● ⁴⁾	6055	4955	5270	4325	3935	-
	645/200-480 ²⁾	● ⁴⁾	3860	3170	3445	2895	2755	-
	645/250-480 ²⁾	●	4635	3795	4035	3310	3010	-
	670/200-480 ²⁾	●	4010	3295	3580	3005	2865	-
	760/250-500 ²⁾	●	5440	4450	4735	3885	3530	-
28 x 10 x 22	711/254-559 ²⁾	●	5460	4490	4880	4100	3900	-
28 x 12 x 22	711/305-559 ²⁾	●■ ⁴⁾	6740	5540	6020	5050	4810	-
28 x 16 x 22	711/406-559 ²⁾	●	9280	7620	8290	6960	6630	-
	850/356-559	●	6280	5140	5460	4490	4080	-
	920/250-670	● ²⁾	9100	7445	7920	6500	5910	-

- 1) Tolerances: OD ± 1.5%, width ± 4%.
 - 2) This includes drive and steered-axle wheels of other lift trucks, mobile cranes, free-rolling wheels on other vehicles (trailers) for distances of up to 2000 m per journey. Please consult manufacturer with respect to longer distances and with regard to use as jockey wheels on drum drives.
 - 3) Type: A-ROBUST (explanation see page 18).
 - 4) MH 20 also available in the Clean version.
 - 5) MC 20 also available in the Clean version.
- MH 20 ■ MC 20

Please note in using CSC tyres:

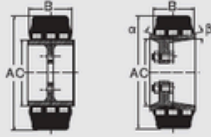
The tyre is electrically non-conductive. Electrostatic discharges in the presence of hazardous materials may cause fire and explosions. The vehicles must therefore be earthed in another suitable way following consultation with the supervisory authorities.

*CONSULTE DISPONIBILIDADE

Press-on bands
Size range and specifications

Technical Data Book
Industrial/ MPT / EM Tyres

Press-on bands with steel wire reinforcement acc. to DIN 7845 resp. ETRTO



MH 20 ●



MC 20 ■

Tyre size ¹⁾		Tyre version ²⁾		Tyre load capacity (kg) at max. speed (mph)									
Inch (A x B x C)	mm (A/B-C)	cylindr. z	tapered k (km α) (ks α/β)	on other vehicles upto				on fork lifts upto					
				4	6	10	12	Load-wheel upto 6	Steer-ed wheel upto 6	Load-wheel upto 10	Steer-ed wheel upto 10		
105/ 45- 65	●	●	km 15	120	100	-	-	-	-	-	-	-	-
125/ 50- 75	●	●	km 15	160	130	-	-	-	-	-	-	-	-
150/ 38-100	●	●	km 15	160	130	-	-	-	-	-	-	-	-
150/ 50-100	●	●	km 15	225	180	-	-	-	-	-	-	-	-
160/ 50-100	●	●	km 15	250	200	-	-	-	-	-	-	-	-
170/ 75-100	●	●	km 15	425	340	260	210	-	-	-	-	-	-
180/ 75-100	●	●	km 15	425	340	260	210	-	-	-	-	-	-
200/ 75-100	●	●	km 15	500	400	300	250	-	-	-	-	-	-
200/ 85-105	●	●	km 15	550	440	330	280	-	-	-	-	-	-
180/100-105	●	●	km 8	625	550	380	310	570	470	510	430	-	-
180/ 50-120	●	●	km 15	325	260	-	-	-	-	-	-	-	-
230/ 75-120	●	●	km 15	550	440	330	280	-	-	-	-	-	-
200/ 50-140	●	●	km 15	350	280	-	-	-	-	-	-	-	-
250/ 75-140	●	●	km 15	625	500	380	310	-	-	-	-	-	-
250/100-140	●	●	km 15	750	600	450	375	765	625	680	575	-	-
250/130-140	●	●	km 15	975	780	590	490	1065	875	950	800	-	-
200/ 60-150	●	●	km 15	425	340	260	210	-	-	-	-	-	-
265/160-160	●	●	ks 15/6	1150	920	690	580	1420	1165	1265	1065	-	-
260/160-160	●	●	ks 15/6	1200	960	720	600	1510	1240	1350	1135	-	-
230/ 50-170	●	●	km 15	400	320	240	200	-	-	-	-	-	-
250/ 60-170	●	●	km 15	550	440	330	280	-	-	-	-	-	-
260/ 60-170	●	●	km 15	525	420	320	260	-	-	-	-	-	-
250/ 75-170	●	●	km 15	650	520	390	330	-	-	-	-	-	-
280/ 75-170	●	●	km 15	700	560	420	350	-	-	-	-	-	-
250/ 80-170	●	●	km 15	675	540	410	340	-	-	-	-	-	-
300/ 85-170	●	●	km 15	800	640	480	400	-	-	-	-	-	-
310/100-170	●	●	km 15	950	760	580	480	880	725	785	660	-	-
270/105-170	●	●	km 8	900	720	540	450	855	705	765	645	-	-
250/ 50-190	●	●	km 15	450	360	270	230	-	-	-	-	-	-
250/ 60-190	●	●	km 15	525	420	320	260	-	-	-	-	-	-
280/ 60-190	●	●	km 15	575	460	350	290	-	-	-	-	-	-
310/ 75-200	●	●	km 15	750	600	450	380	-	-	-	-	-	-
285/100-200	●	●	km 8	925	740	560	460	825	675	735	620	-	-
310/120-200	●	●	ks 15/6	1050	840	630	530	1135	930	1010	850	-	-
310/140-200	●	●	ks 15/6	1225	975	725	600	1370	1125	1225	1030	-	-
300/ 90-203	●	●	km 15	900	720	540	450	-	-	-	-	-	-
300/100-203	●	●	km 8	975	780	590	490	870	715	775	650	-	-
313/130-203	●	●	km 8	1150	920	690	580	1260	1035	1125	945	-	-
13 1/2 x 4 1/2 x 8	●	●	ks 15/6	1150	920	690	580	1150	940	1025	860	-	-
13 1/2 x 5 1/2 x 8	●	●	ks 15/6	1350	1075	810	680	1510	1240	1345	1130	-	-

Tyre size ¹⁾		Tyre version ²⁾		Tyre load capacity (mph) at max. speed (mph)									
Inch (A x B x C)	mm (A/B-C)	cylindr. z	tapered k (km α) (ks α/β)	on other vehicles upto				on fork lifts upto					
				4	6	10	12	Load-wheel upto 6	Steer-ed wheel upto 6	Load-wheel upto 10	Steer-ed wheel upto 10		
280/ 50-220	●	●	km 15	525	420	320	260	-	-	-	-	-	-
300/ 50-220	●	●	km 15	550	440	330	280	-	-	-	-	-	-
310/ 60-220	●	●	km 15	650	520	390	330	-	-	-	-	-	-
280/ 75-220	●	●	km 10	725	580	440	360	-	-	-	-	-	-
300/ 75-220	●	●	km 10	750	600	450	380	-	-	-	-	-	-
310/120-220	●	●	km 10	1050	840	630	530	1105	905	985	830	-	-
405/160-250	●	●	ks 15/6	1550	1240	930	780	2045	1680	1825	1530	-	-
16 x 5 x 10 1/2	●	●	ks 15/6	1350	1075	810	680	1510	1240	1345	1130	-	-
16 x 6 x 10 1/2	●	●	ks 15/6	1575	1250	950	790	1910	1570	1710	1435	-	-
16 x 7 x 10 1/2	●	●	ks 15/6	1800	1450	1075	900	2325	1910	2070	1740	-	-
360/ 60-270	●	●	km 15	750	600	450	380	-	-	-	-	-	-
360/ 75-270	●	●	km 15	950	760	570	480	-	-	-	-	-	-
360/ 85-270	●	●	km 15	1050	840	630	530	-	-	-	-	-	-
400/ 65-305	●	●	km 15	900	720	540	450	-	-	-	-	-	-
400/ 75-305	●	●	km 15	1000	800	600	500	-	-	-	-	-	-
415/ 90-305	●	●	km 15	1150	920	690	580	-	-	-	-	-	-
415/100-305	●	●	km 8	1250	1000	750	630	1115	915	1000	835	-	-
455/100-305	●	●	km 8	1400	1120	840	700	1155	950	1030	865	-	-
405/130-305	●	●	km 15	1500	1200	900	750	1510	1240	1350	1135	-	-
425/150-305	●	●	ks 15/6	1800	1450	1100	900	1910	1570	1700	1435	-	-
18 x 7 x 12 1/8	●	●	ks 15/6	2000	1600	1200	1000	2550	2100	2280	1910	-	-
21 x 9 x 13	●	●	ks 15/8	3000	2400	1800	1500	3690	3020	3210	2635	-	-
500/ 85-370	●	●	km 15	1300	1050	780	650	-	-	-	-	-	-
520/100-370	●	●	km 15	1525	1225	920	760	1275	1050	1140	955	-	-
525/120-370	●	●	km 15	1800	1450	1075	900	1675	1375	1500	1260	-	-
500/125-370	●	●	km 15	1800	1450	1075	900	-	-	-	-	-	-
21 x 9 x 15	●	●	ks 15/8	3000	2400	1800	1500	3900	3200	3475	2920	-	-
500/ 65-410	●	●	km 15	1100	880	660	550	-	-	-	-	-	-
560/100-410 ³⁾	●	●	km 15	1600	1275	960	800	1350	1110	1205	1015	-	-
550/120-410	●	●	km 8	1825	1450	1100	910	1750	1440	1565	1315	-	-
590/120-410 ³⁾	●	●	km 8	1900	1525	1150	950	1780	1460	1590	1335	-	-
610/150-410 ³⁾	●	●	km 15	2250	1800	1350	1125	2505	2055	2235	1880	-	-
550/160-410	●	●	km 15	2250	1800	1350	1125	2550	2100	2280	1915	-	-
540/200-410	●	●	km 15	3000	2400	1800	1500	3790	3110	3290	2705	-	-
620/200-410 ^{3,4)}	●	●	km 15	3000	2400	1800	1500	3790	3110	3380	2840	-	-
645/250-410 ⁴⁾	●	●	km 15	3750	3000	2250	1875	4810	3930	4180	3430	-	-
645/300-410 ⁴⁾	●	●	km 15	4700	3750	2800	2350	6060	4960	5275	4330	-	-
645/200-480 ⁴⁾	●	●	km 15	3100	2475	1850	1550	3865	3175	3450	2900	-	-
750/ 75-640	●	●	km 15	1750	1400	1050	875	-	-	-	-	-	-

Please consult manufacturer with respect to longer distances and with regard to use as jockey wheels on drum drives.

- 1) Tolerances: OD ± 1.5%, width ± 4%.
- 2) Explanation:
● MH 20
■ MC 20
▲ Also available in the Clean version.
- 3) Tyres for use on public roads (60-joule tyres).
Special load capacities on request.
- 4) Type: A-ROBUST (See page 18 for explanation).

Further sizes on request.



PNEUS, RODAS E GARFOS INDUSTRIAIS



www.rdfpneus.com.br



(11) 4705-8730

(11) 99151-8194



Rua Hiroshi Okada, 176 - Jardim Represa (Fazendinha), Santana de Parnaíba - SP, 06529-350

Continental 
The Future in Motion